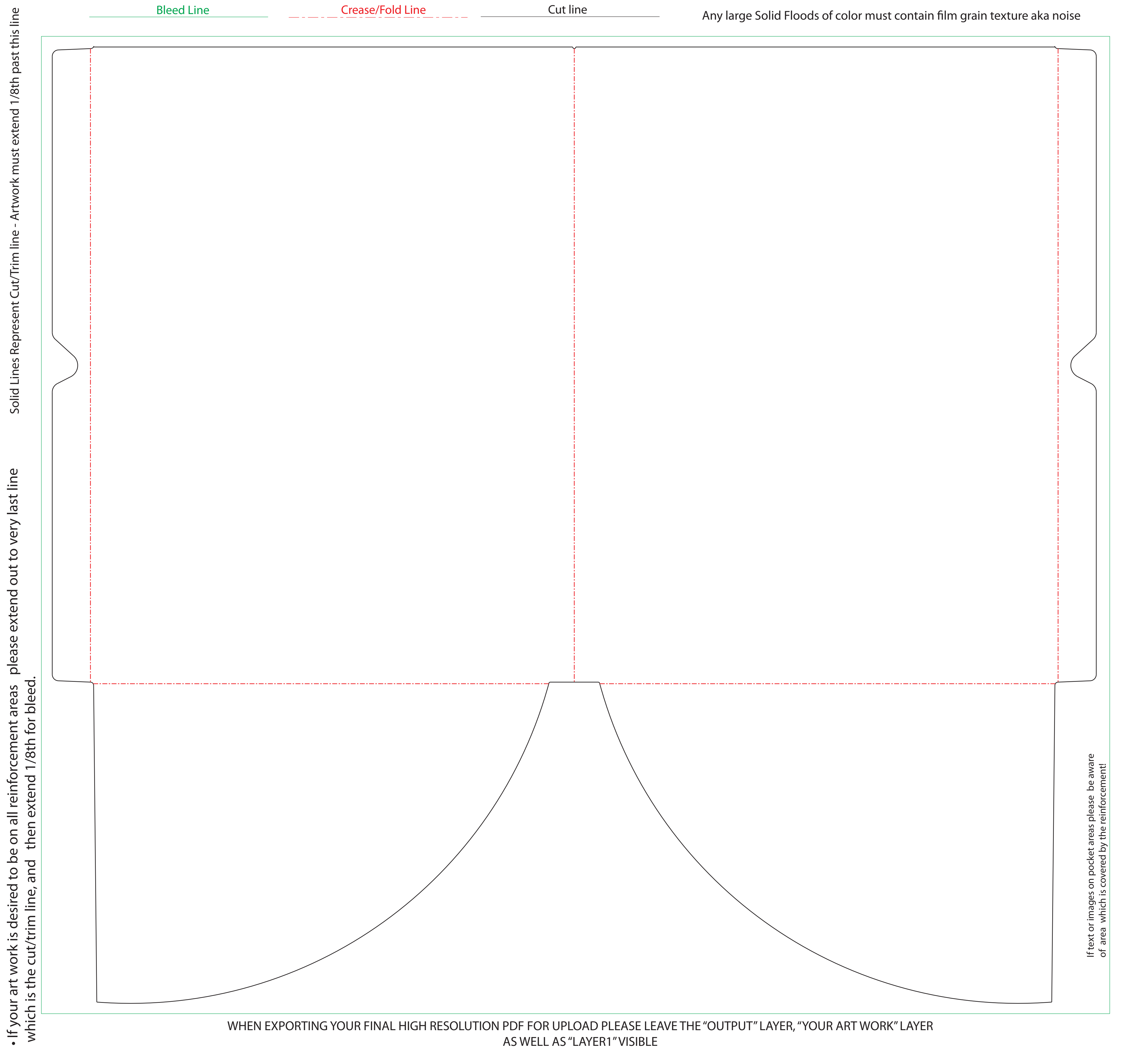


• If your art work is desired to be on all reinforcement areas please extend out to very last line which is the cut/trim line, and then extend 1/8th for bleed.



Bleed Line

Crease/Fold Line

Cut line

Any large Solid Floods of color must contain film grain texture aka noise

Solid Lines Represent Cut/Trim line - Artwork must extend 1/8th past this line

please extend out to very last line

WHEN EXPORTING YOUR FINAL HIGH RESOLUTION PDF FOR UPLOAD PLEASE LEAVE THE "OUTPUT" LAYER, "YOUR ART WORK" LAYER AS WELL AS "LAYER1" VISIBLE

If text or images on pocket areas please be aware of area which is covered by the reinforcement!

