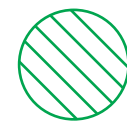
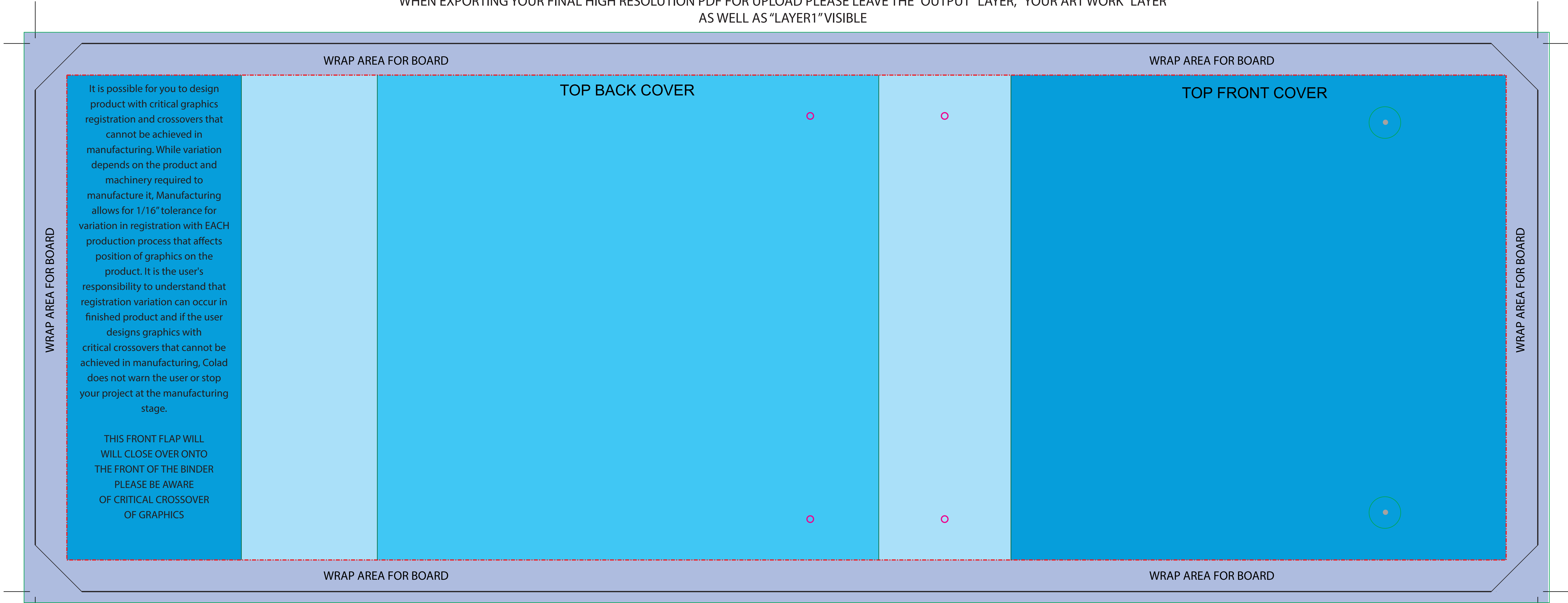


WHEN EXPORTING YOUR FINAL HIGH RESOLUTION PDF FOR UPLOAD PLEASE LEAVE THE “OUTPUT” LAYER, “YOUR ART WORK” LAYER
AS WELL AS “LAYER1” VISIBLE



= VELCOIN LOCATOR



= RIVETS BASED ON SPINE OR BACK COVER RING METAL PLACEMENT

THERE IS APPX 1/8" VARIANCE AFFECTING WRAP & LINER PLACEMENT ON CHIPBOARD, INCLUDING THE HINGE FOLDS AT SPINE.
IF YOUR ARTWORK INCLUDES GRAPHICS SPECIFIC TO THE SPINE, BE AWARE THAT THERE WILL BE APPX 1/8" VARIANCE TO EITHER SIDE.
DO NOT TERMINATE TEXT / GRAPHICS ON OR NEAR THE 'WRAP AREA' TURN-INS. WE RECOMMEND A 1/4" SAFE AREA FROM FOLDS.

